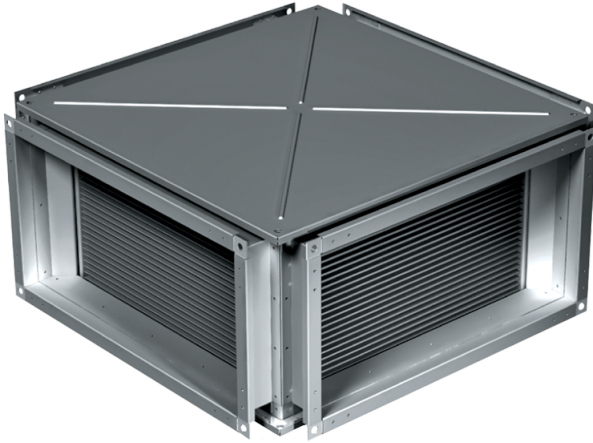


KWT 60x35

Plate heat exchangers for rectangular ducts

- Casing material: Galvanized steel



| | Unit of measurement | KWT 60x35 |
|--------|---------------------|-----------|
| Weight | kg | 33.4 |

Dimensions

| B | B1 | B2 | H | H1 | H2 | H3 | L |
|-----|-----|-----|-----|-----|-----|-----|-----|
| 600 | 620 | 640 | 350 | 370 | 390 | 425 | 730 |

