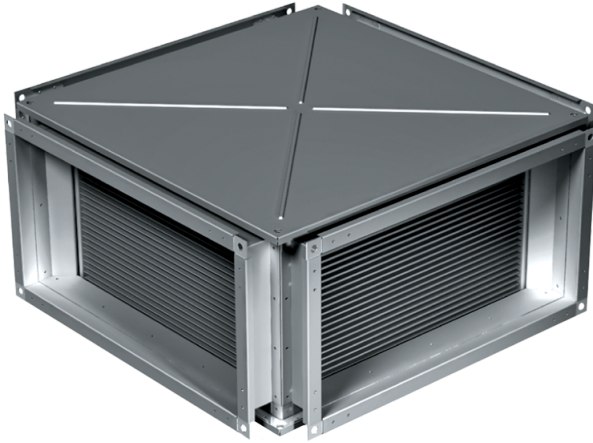


KWT 40x20

Plate heat exchangers for rectangular ducts

- Casing material: Galvanized steel



| | Unit of measurement | KWT 40x20 |
|--------|---------------------|-----------|
| Weight | kg | 17.1 |

Dimensions

| B | B1 | B2 | H | H1 | H2 | H3 | L |
|-----|-----|-----|-----|-----|-----|-----|-----|
| 400 | 420 | 440 | 200 | 220 | 240 | 275 | 530 |

