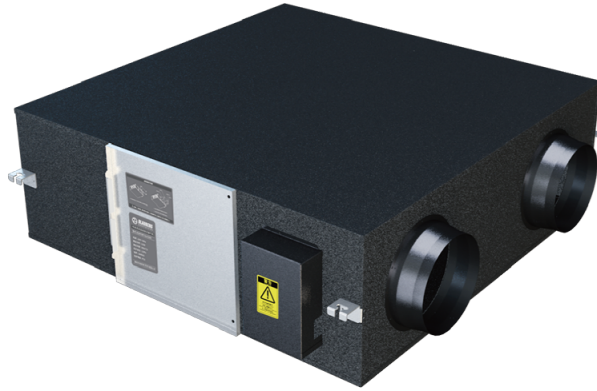


# KOMFORT GRE EC 1000

The KOMFORT GRE series total heat recovery unit is designed specifically for ultra-low energy consumption buildings



- Maximum airflow: 1000
- Sound pressure level LpA at 3 m: 48
- Heat exchanger type: Counter flow
- Extract filter: G4
- Supply filter: G4 + H11
- Sound insulation
- Motor type: EC
- Enthalpy heat exchanger
- Bypass: Auto
- Preheater: Optional
- Casing material: Galvanized steel
- Humidity sensor
- CO2 sensor
- VOC sensor
- PM2.5 sensor
- Temperature sensor

|                                 | Unit of measurement | KOMFORT GRE EC 1000 |
|---------------------------------|---------------------|---------------------|
| Minimum supply voltage          | V                   | 220                 |
| Maximum supply voltage          | V                   | 220                 |
| Power supply frequency          | Hz                  | 50                  |
| Rated power                     | W                   | 440                 |
| Maximum airflow                 | m <sup>3</sup> /h   | 1000                |
| Sound pressure level LpA at 3 m | dB(A)               | 48                  |
| Heat recovery efficiency, max   | %                   | 70.5                |
| Heat exchanger type             | -                   | Counter flow        |
| Weight                          | kg                  | 84                  |
| Extract filter                  | -                   | G4                  |
| Supply filter                   | -                   | G4 + H11            |

## Dimensions

| L    | W    | H   | A    | B    | C   | D   | E   | F   | G   | J    | K    | M   |
|------|------|-----|------|------|-----|-----|-----|-----|-----|------|------|-----|
| 1140 | 1375 | 390 | 1070 | 1310 | 385 | 680 | 285 | 680 | 245 | 1430 | 1585 | 195 |

