

JET

CLASSIC MODELS

Features



- o Wall and ceiling mounting
- o Ball bearing motor
- o Easy mounting with the help of locking tabs or screws
- o Light indication for fan operation
- o Modern design
- o Available in aluminium finish (Jet Hi-Tech)
- o 5 year warranty



Air flow:
95 m³/h
26 l/s



Power:
14 W
SFP:
0.53 W/l/s



Noise level:
34 dBA



Jet Hi-Tech

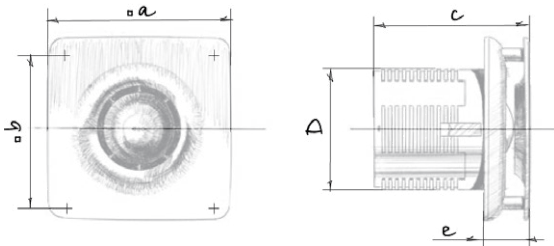
Options



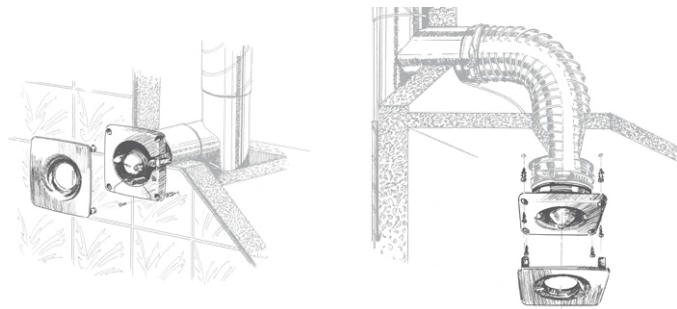
Model	Jet 100	
Option	T	H
Timer	•	•
Humidity sensor		•

- o Turn-off delay adjustable from 2 to 30 min.
- o Humidity setpoint adjustable from 60 % up to 90 %.

Overall dimensions and mounting



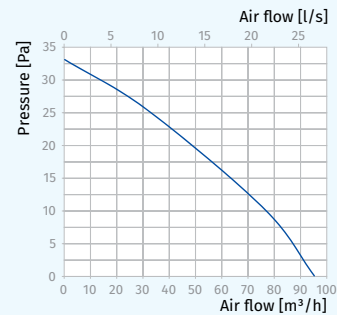
Dimensions [mm]	a	b	c	Ø d	e
Jet 100	150	122	125	98	36



Technical data

Model	Jet 100
Voltage [V/Hz]	220-240/50
Power [W]	14
Current [A]	0.085
RPM [min ⁻¹]	2300
Air flow [m ³ /h (l/s)]	95 (26)
SFP [W/l/s]	0.53
Sound pressure level [dBA]*	34

* Sound pressure level measured in free space at a distance of 3 meters from the fan.



Designation key

Jet	Hi-Tech	100	H
Model	Colour	Spigot diameter	Option

Accessories

Duct system	Flexible air ducts	Grilles and hoods	Speed controllers	Clamps
BlauPlast	BlauFlex	Decor, GM	CDT E1.8 MCD 60/0.3	K, KZ